

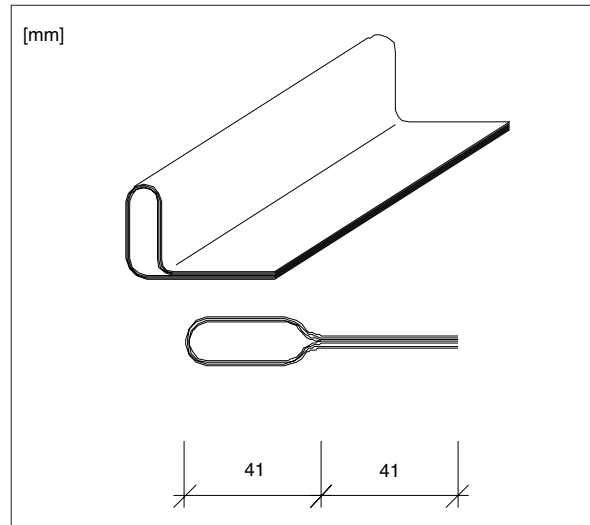
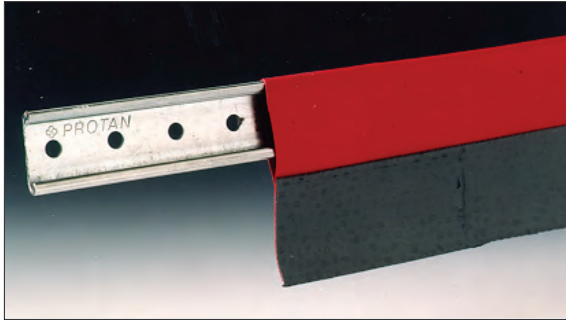
Specifikationer

Protan Prisliste

Protan Membran for murkrone

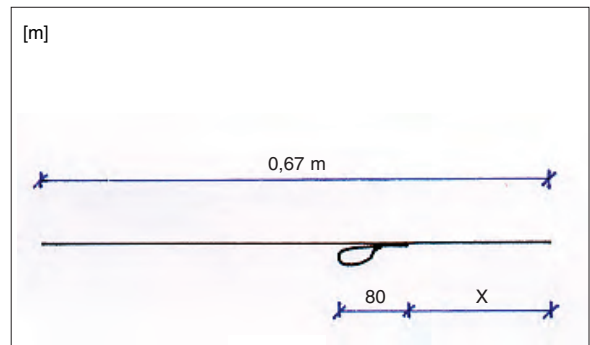
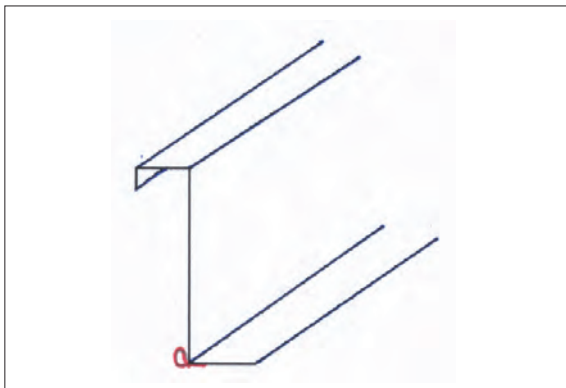
1.0 Protan løs fliplomme

Dimension: L = 1.98 m



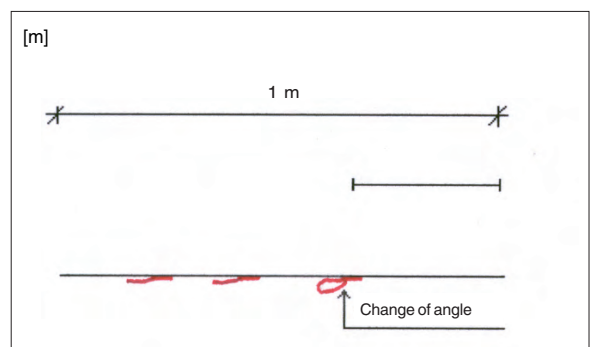
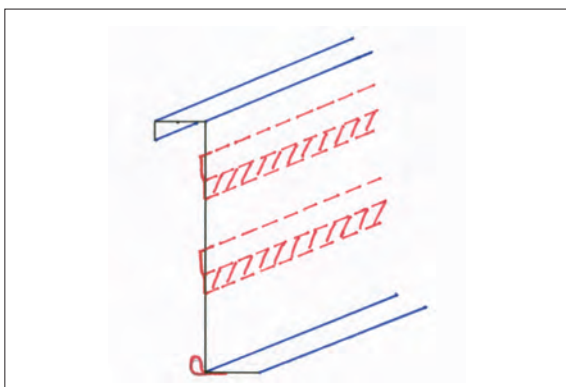
1.1 Protan murkroneinddækning

Dimension: 0.67 m x 4.10 og 20.0 m m/1 lomme



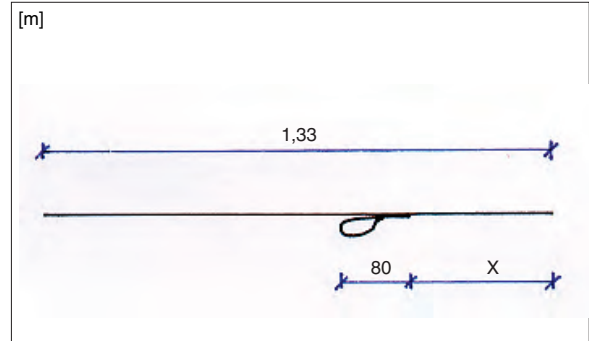
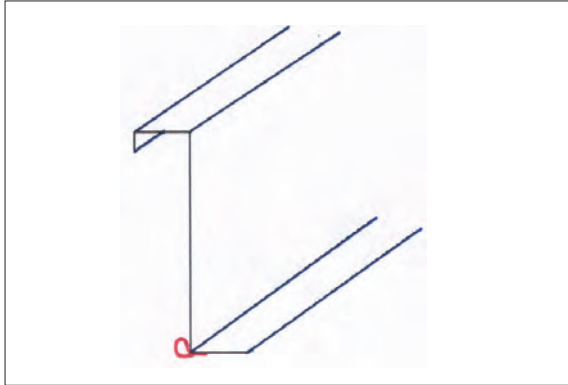
1.2 Protan murkroneinddækning

Dimension: 1 m x 4.10 og 20.0 m m/1 lomme +1 flip



1.3 Protan murkroneinndækning

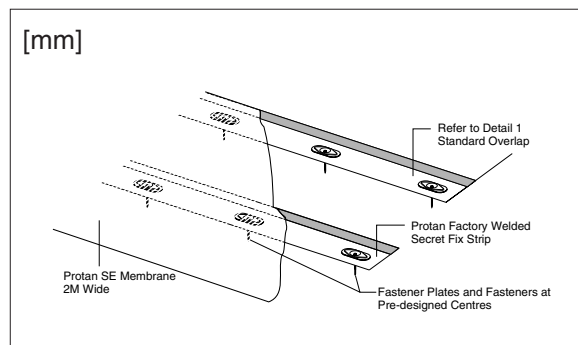
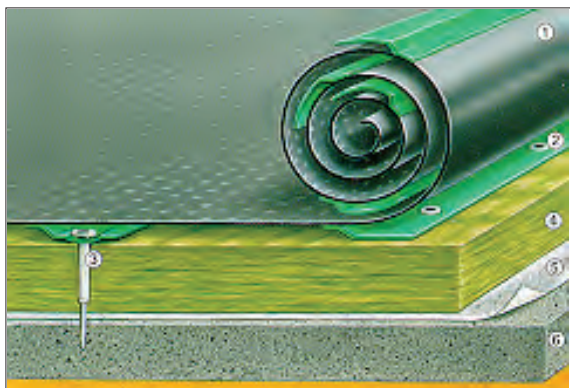
Dimension: 1,33 m x 4.10 og 20.0 m m/1 lomme



Protan Rulleflip

2.0 Protan Rulleflip

Dimension: 2 x 15 m, flip c/c 40 cm til 120 cm

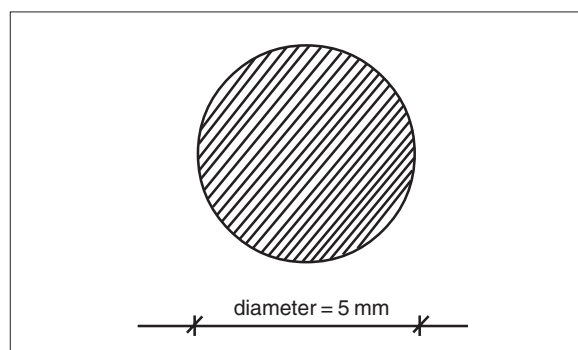


Protan svejsetråd

3.0 Protan svejsetråd

Dimension: $\text{\O} = 50 \text{ mm}$, L = 70 m

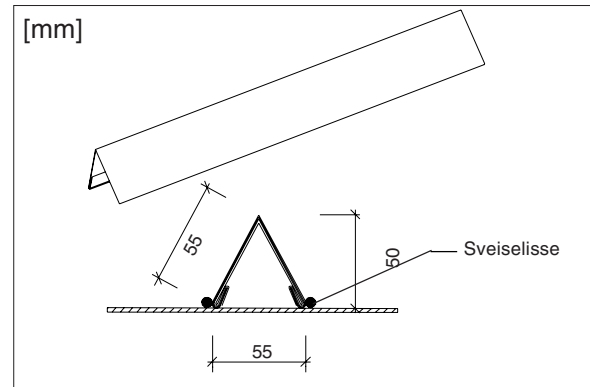
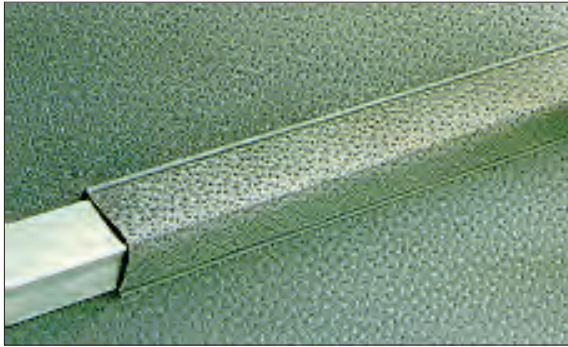
Farver: Lys grå (F91), mørk grå (F94), terrassegrøn (F45), rød (F12)



Protan Trekantprofil

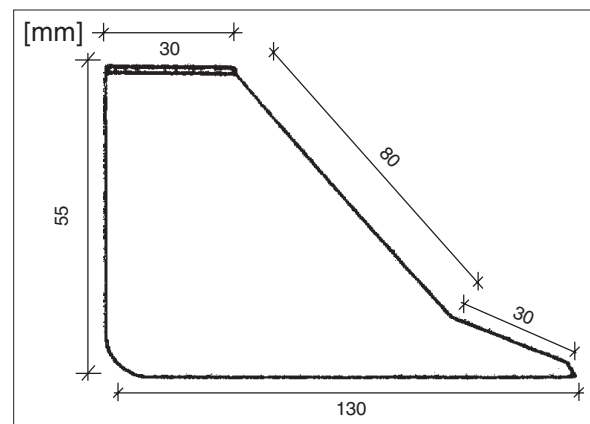
4.0 Protan Trekantprofil

Dimension: 2 m L, 1 mm tyk aluminium (andre dimensjoner kan leveres)



4.1 Præfabrikeret detalje for Protan Trekantprofil

Materiale: Protan SE og Protan G

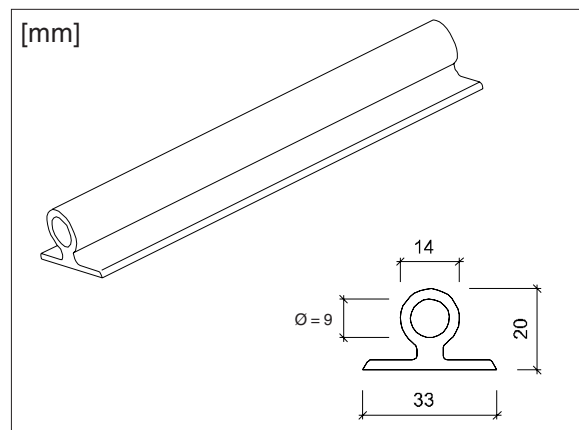
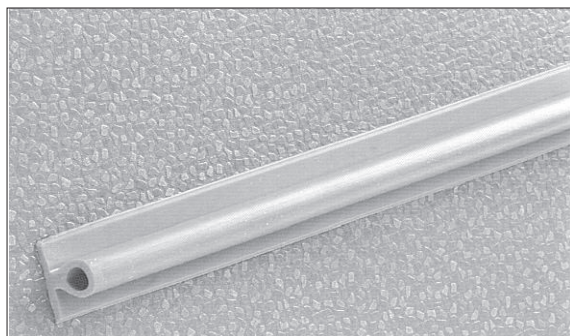


Protan Omegaprofil

5.0 Protan Omegaprofil

Dimension: 4 m længder

Farver: Lys grå (F91), mørk grå (F94), irgrøn (F41), rød (F12), sort (F99)



Protan Kontaklim 95

6.0 Protan Kontaklim 95

Vægt: Spand (10 liter)

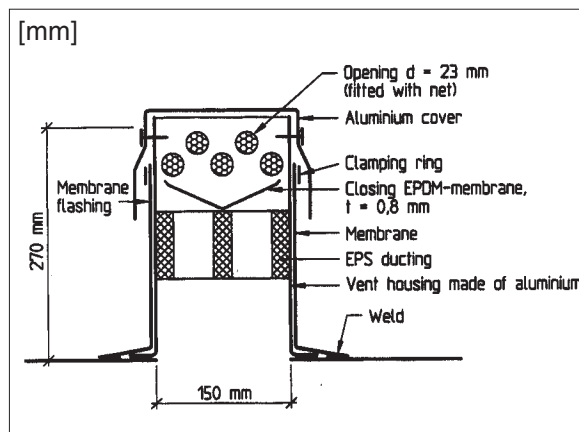


For mere information, venligst se datablad

Protan Vakuumsystem

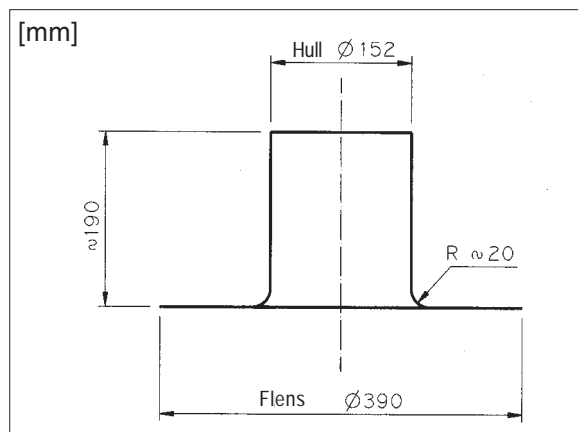
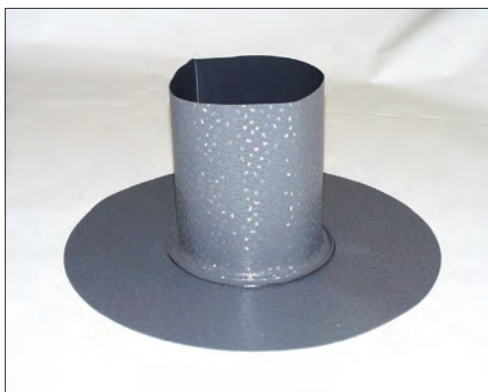
7.0 Ventil

Materiale: Aluminium
 Dimension: $\varnothing = 150 \text{ mm}$, $h = 270 \text{ mm}$



7.1 Præfabrikeret inddækningsdetalje/vakuumentil

Materiale: Protan G
 Dimension: $\varnothing = 152 \text{ mm}$, $h = 190 \text{ mm}$



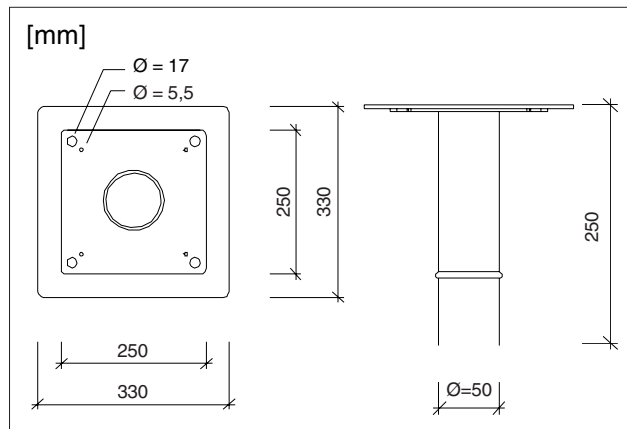
7.2 Protan Tættebånd

Længde: 15 m
Bredde: 40 mm
Tykkelse: 6 mm



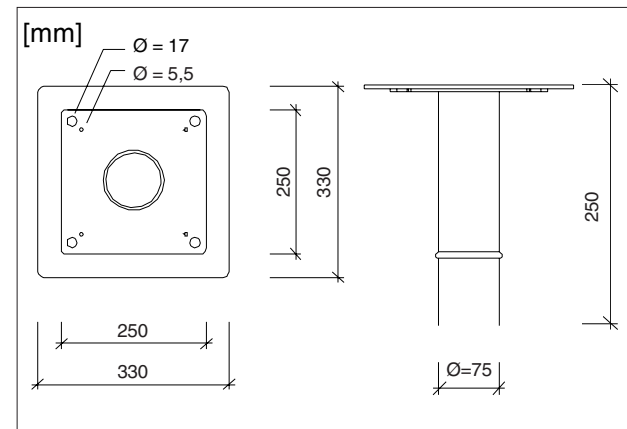
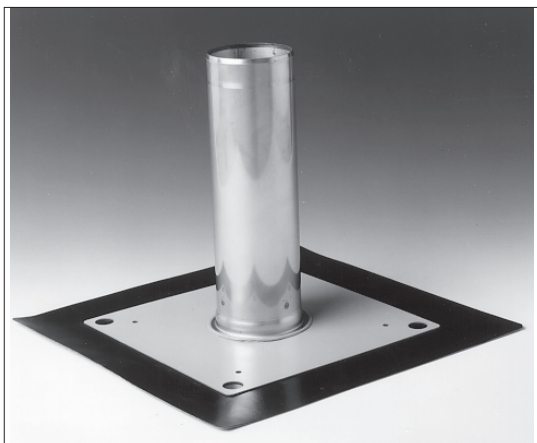
8.0 Jual tagbrønd

Materiale: PVC-belagt rustfrit stål + Protan G
 Dimension: $\varnothing = 50 \text{ mm}$, $l = 250 \text{ mm}$



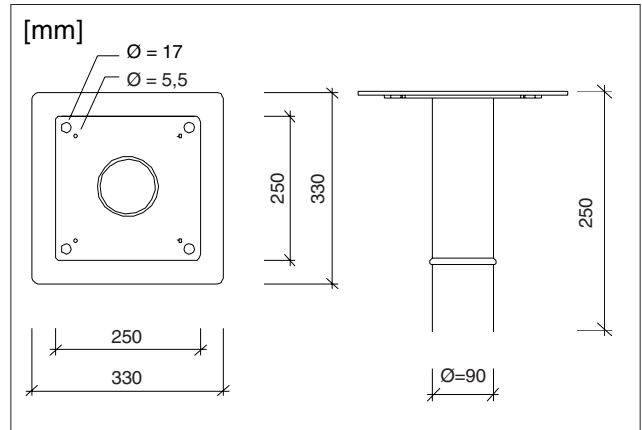
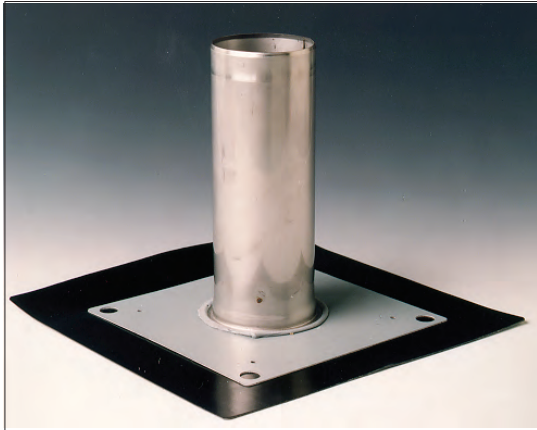
8.1 Jual tagbrønd

Materiale: PVC-belagt rustfrit stål + Protan G
 Dimension: $\varnothing = 75 \text{ mm}$, $h = 250 \text{ mm}$



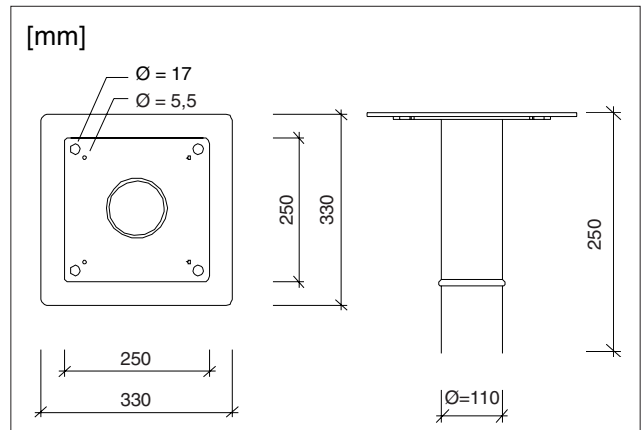
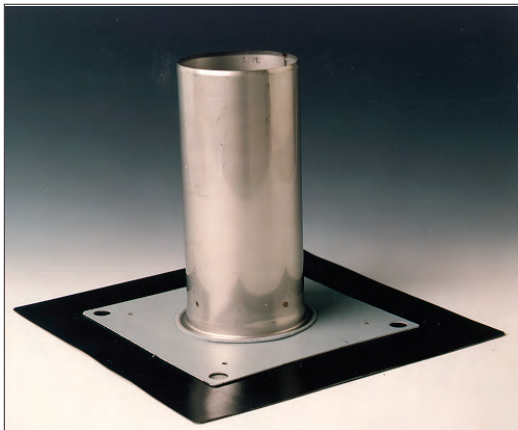
8.2 Jual tagbrønd

Materiale: PVC-belagt rustfrit stål + Protan G
 Dimension: $\text{Ø} = 90 \text{ mm}$, $h = 250 \text{ mm}$



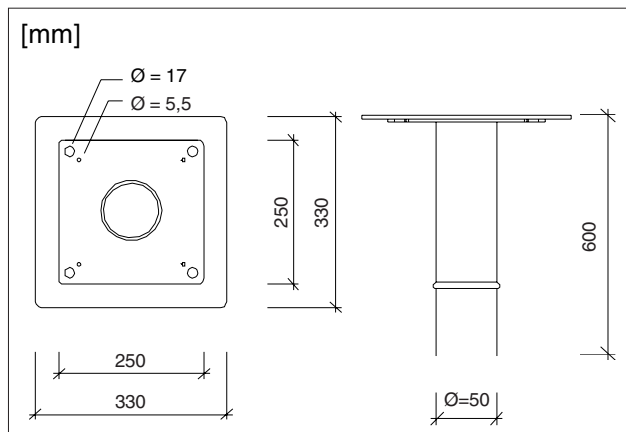
8.3 Jual tagbrønd

Materiale: PVC-belagt rustfrit stål + Protan G
 Dimension: $\text{Ø} = 110 \text{ mm}$, $h = 250 \text{ mm}$



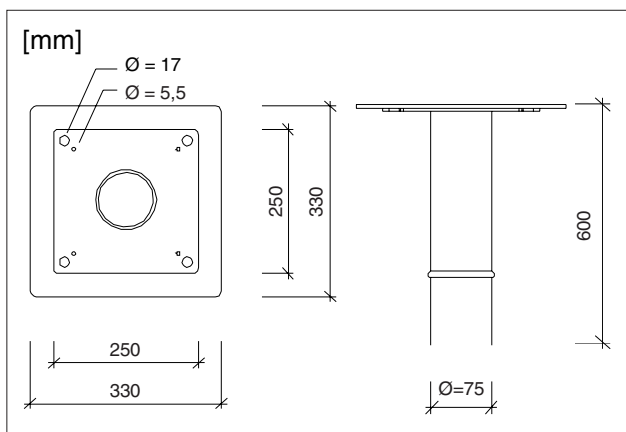
8.4 Jual tagbrønd

Materiale: PVC-belagt rustfrit stål + Protan G
 Dimension: $\text{Ø} = 50 \text{ mm}$, $h = 600 \text{ mm}$



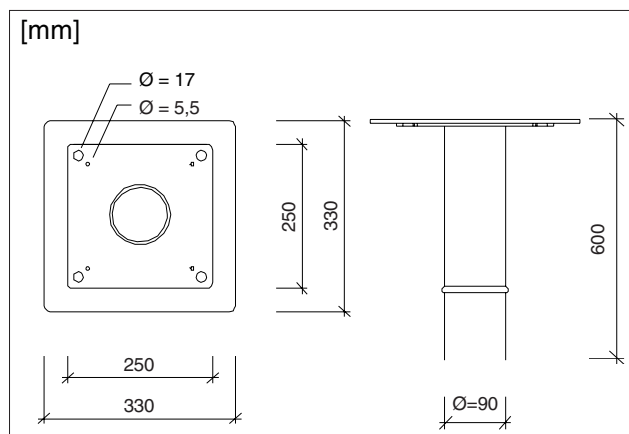
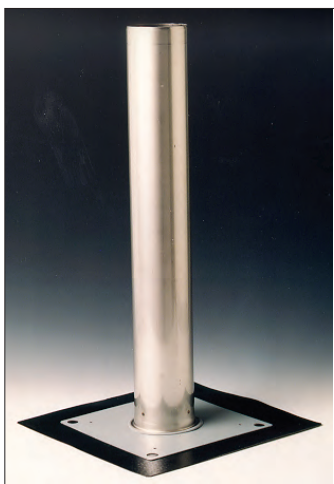
8.5 Jual tagbrønd

Materiale: PVC-belagt rustfrit stål + Protan G
 Dimension: $\text{Ø} = 75 \text{ mm}$, $h = 600 \text{ mm}$



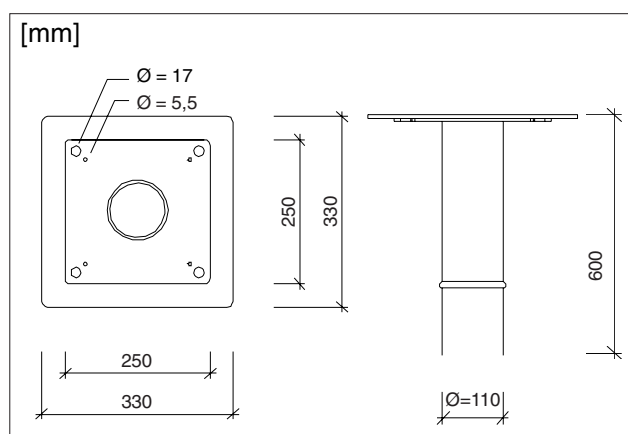
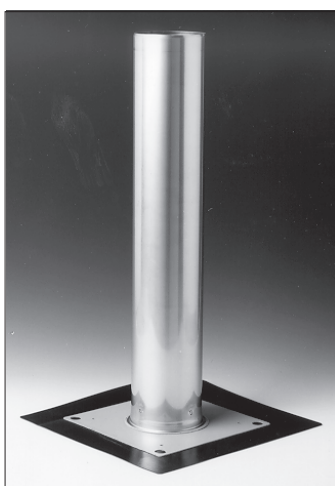
8.6 Jual tagbrønd

Materiale: PVC-belagt rustfrit stål + Protan G
 Dimension: $\text{Ø} = 90 \text{ mm}$, $h = 600 \text{ mm}$



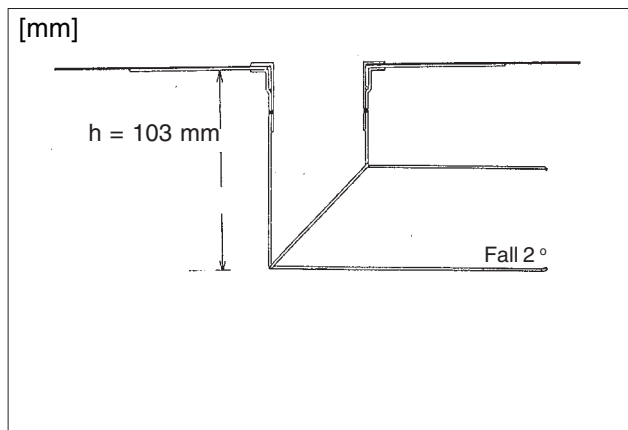
8.7 Jual tagbrønd

Materiale: PVC-belagt rustfrit stål + Protan G
 Dimension: $\text{Ø} = 110 \text{ mm}$, $h = 600 \text{ mm}$



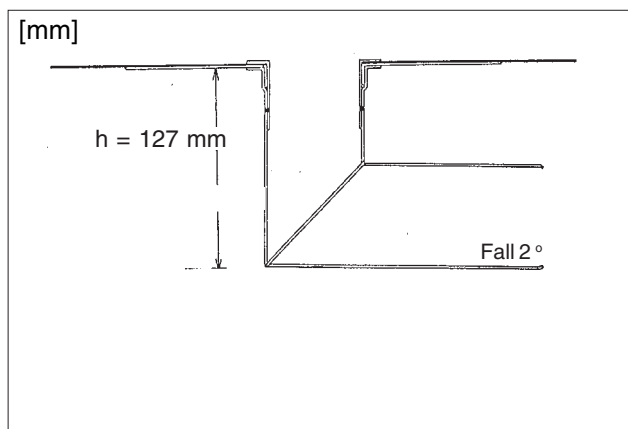
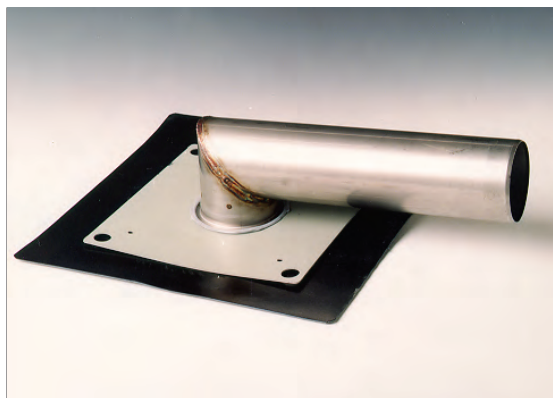
8.8 Jual tagbrønd

Materiale: PVC-belagt rustfrit stål + Protan G
 Dimension: $\text{Ø} = 50 \text{ mm}$, $h = 103 \text{ mm}$



8.9 Jual tagbrønd

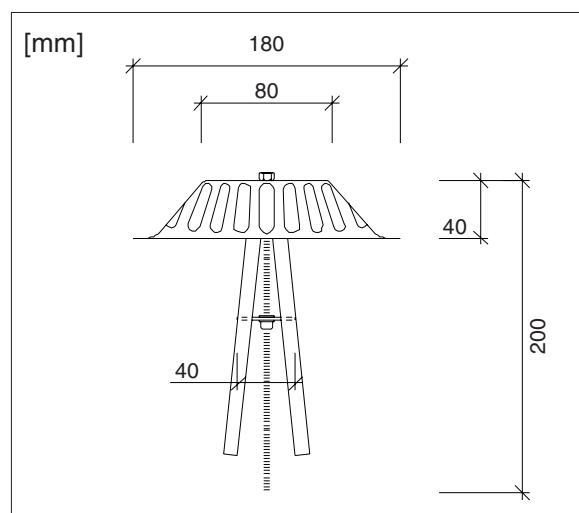
Materiale: PVC-belagt rustfrit stål + Protan G
 Dimensiion: $\text{Ø} = 75 \text{ mm}$, $h = 127 \text{ mm}$



Tilbehør tagbrønd

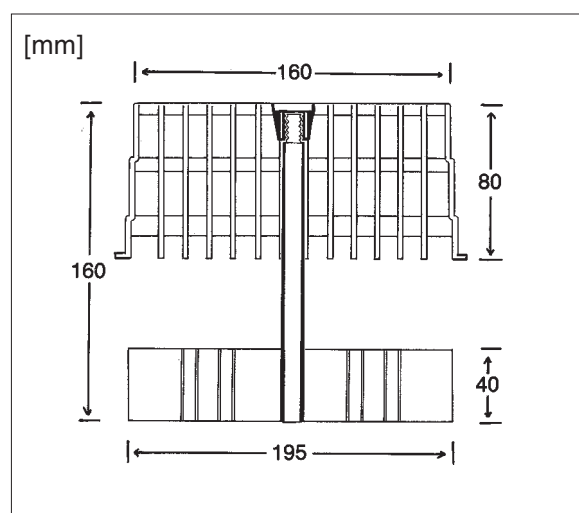
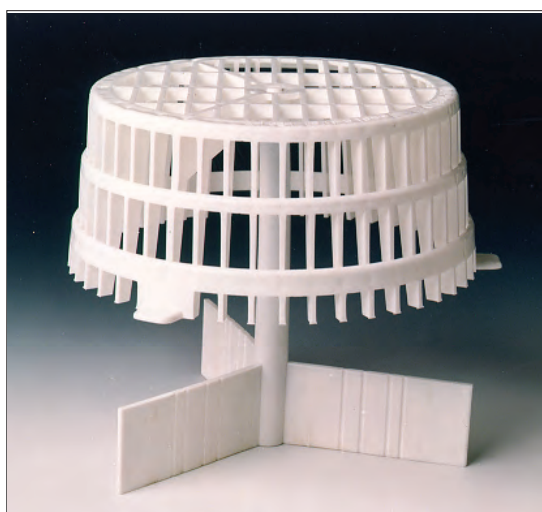
9.0 Løvrisk - rustfrit stål

Materiale: Rustfrit stål
 Dimension: $\text{Ø} = 180 \text{ mm}$, $h = 200 \text{ mm}$



9.1 Løvrisk - plast

Materiale: Polypropylen
 Dimension: $\text{Ø} = 160 \text{ mm}$, $h = 160 \text{ mm}$



9.2 Terrasserist - rustfrit stål

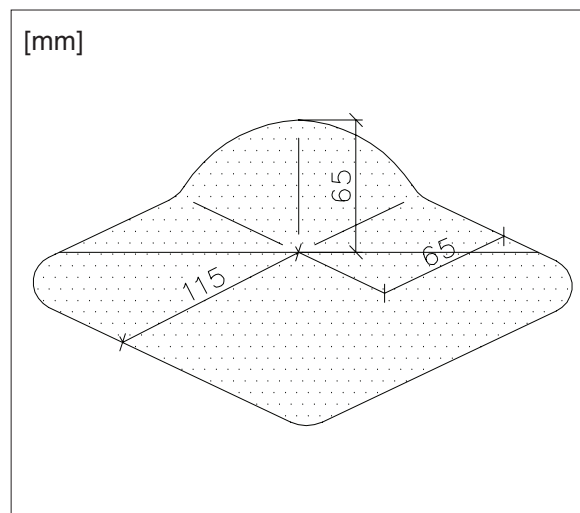
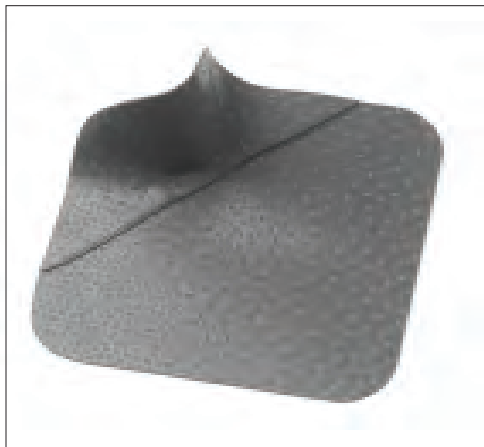
Materiale: Rustfrit stål
Dimensjon: $\text{Ø} = 128 \text{ mm}$, $h = 72 \text{ mm}$



Præfabrikerede inddækningsdetaljer

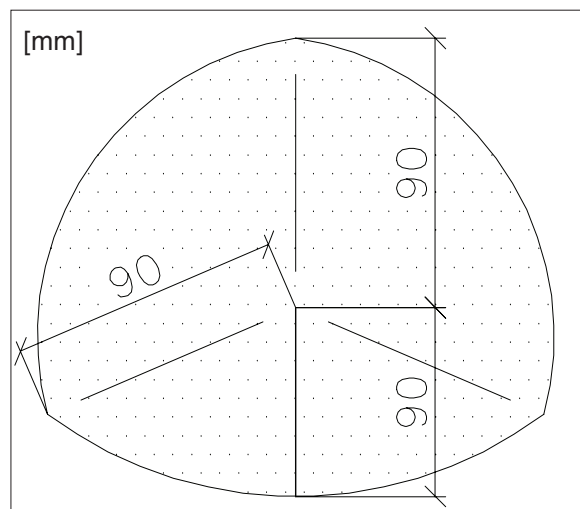
10.0 Protan udvendig hjørne

Materiale: Protan G



10.1 Protan indvendig hjørne

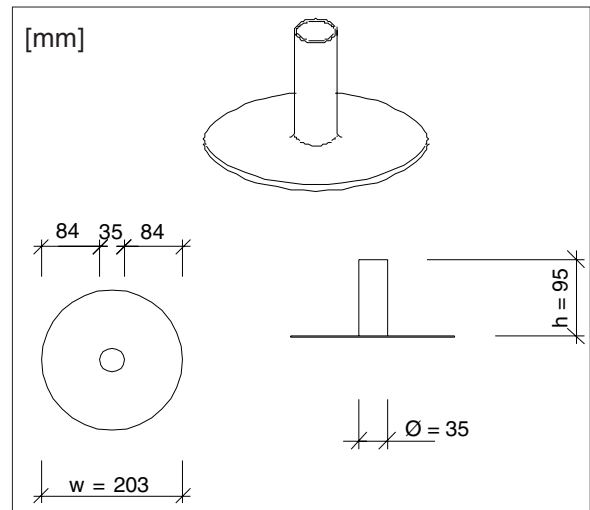
Materiale: Protan G



Præfabrikerede inndækningsdetaljer

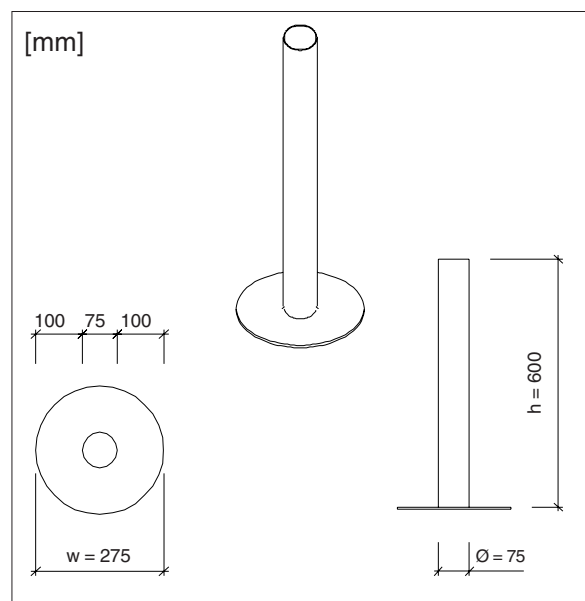
11.0 Protan rør, $\text{Ø} = 35 \text{ mm}$

Materiale: Rør: Protan G, flance: Protan SE



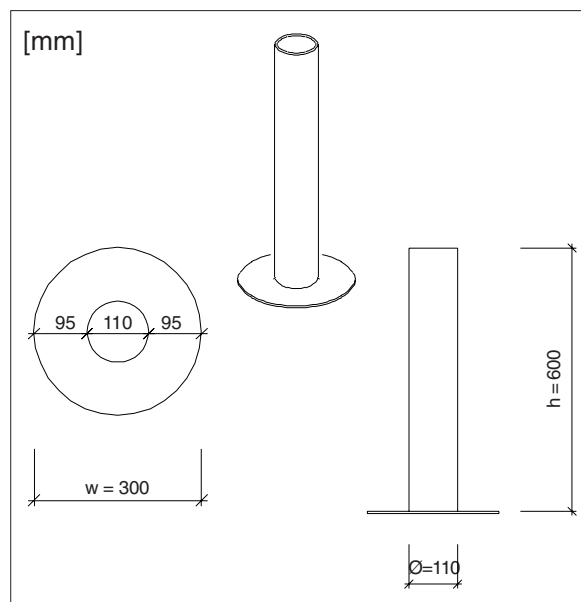
11.1 Protan rør, $\text{Ø} = 75 \text{ mm}$

Materiale: Rør: Protan G, flance: Protan SE



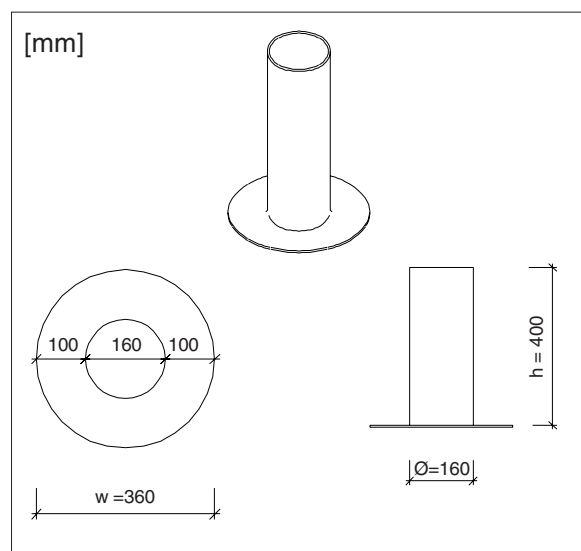
11.2 Protan rør, $\text{\O} = 110 \text{ mm}$

Materiale: Rør: Protan G, flange: Protan SE



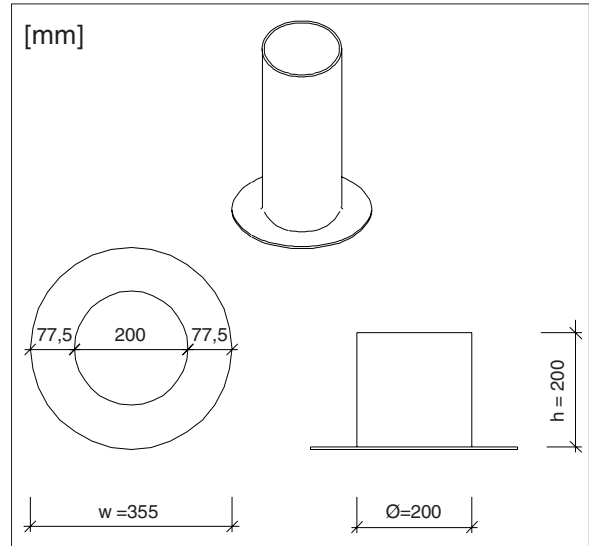
11.3 Protan rør, $\text{\O} = 160 \text{ mm}$

Materiale: Rør: Protan G, flange: Protan SE



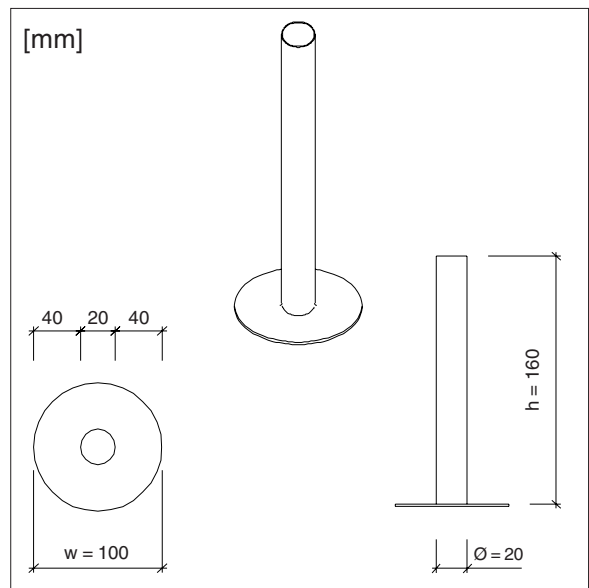
11.4 Protan rør, $\varnothing = 200$ mm

Materiale: Rør: Protan G, flance: Protan SE



11.5 Protan rør, $\varnothing = 20$ mm

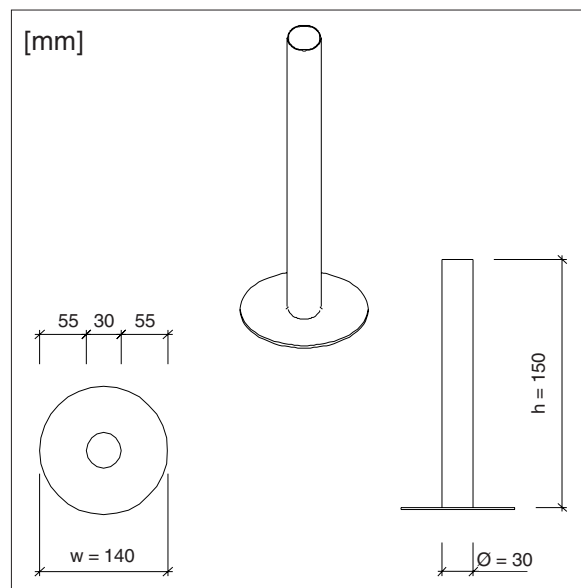
Materiale: Rør: Ikke armeret PVC membran, flance: Protan SE



11.6 Protan rør, $\text{Ø} = 30 \text{ mm}$

Materiale:

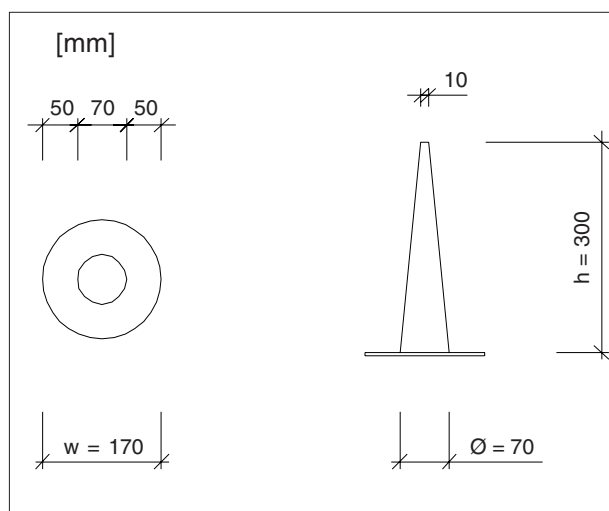
Rør: Ikke armeret PVC membran, flance: Protan SE



12.0 Konisk inddækningsdetalje

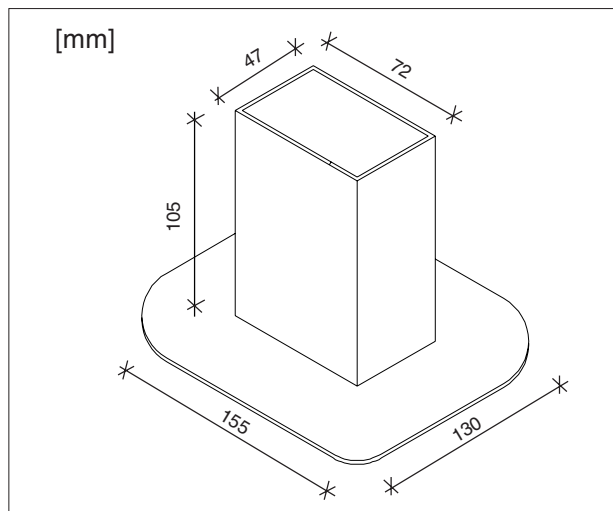
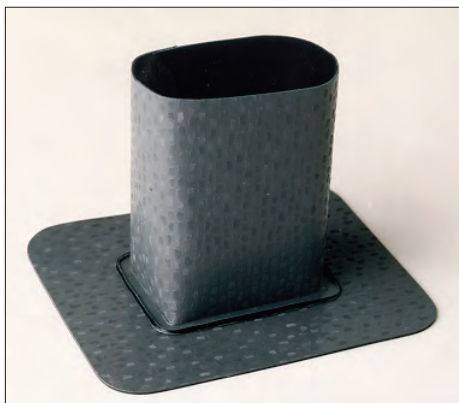
Materiale:

Rør: Protan SE, flance: Protan G



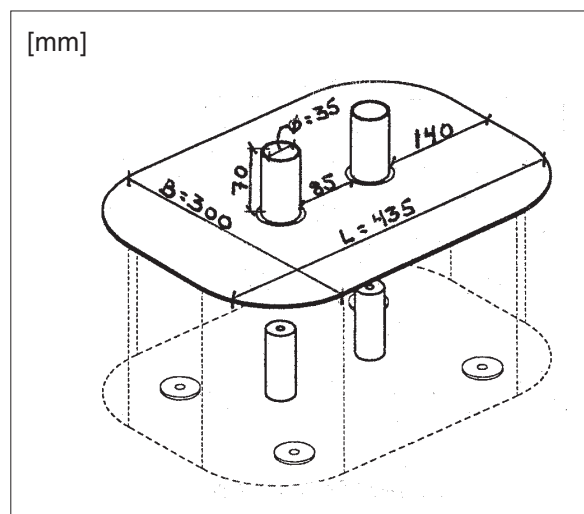
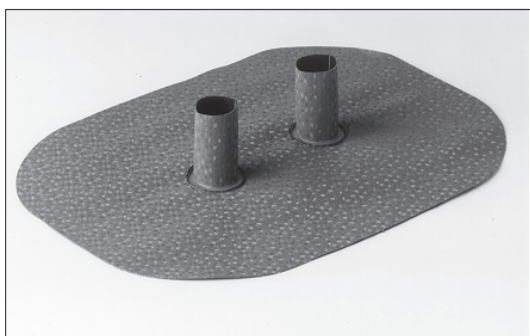
13.0 Præfabrikeret detalje for rækværksstolper

Materiale: Protan GT



14.0 Præfabrikeret detalje for snefang

Materiale: Rør: Protan GT, flange: Protan SE

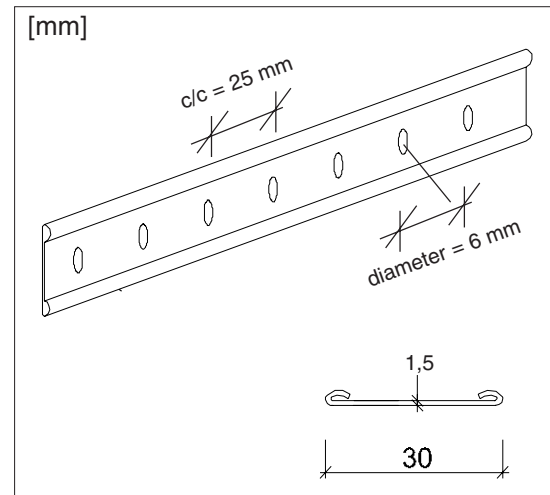
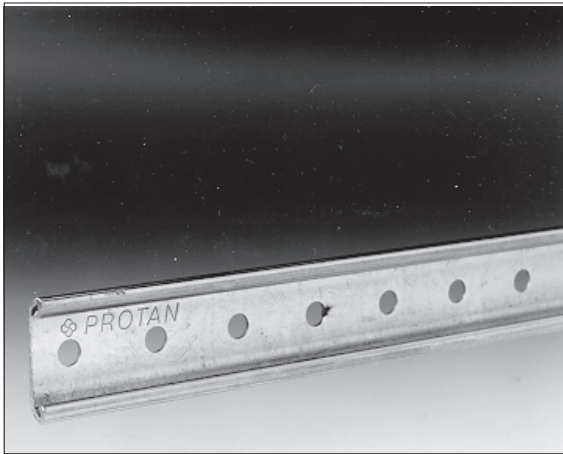


Protan stålskinne

15.0 Protan stålskinne

Materiale: Stål

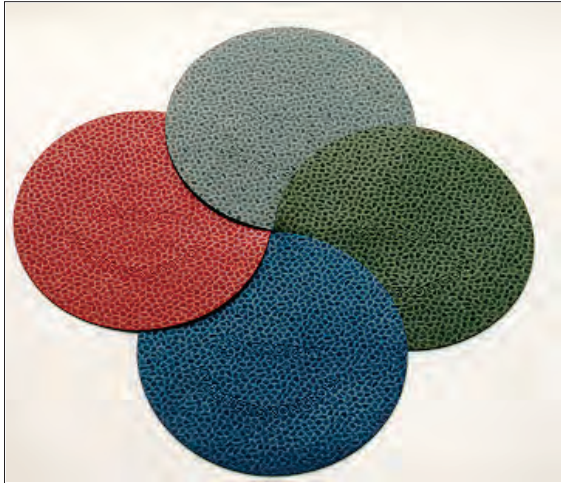
Dimension: Længder á 1,95 m



Protan kontrollapper

16.0 Protan SE

Materiale: Protan SE
Dimension: Ø = 180 mm



Protan svejselapper

16.1 Protan SE

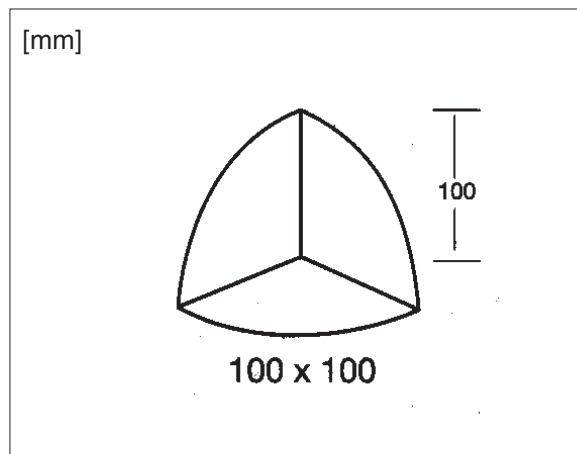
Materiale: Protan SE
Dimension: Ø = 110 mm og 180 mm



Protan FP

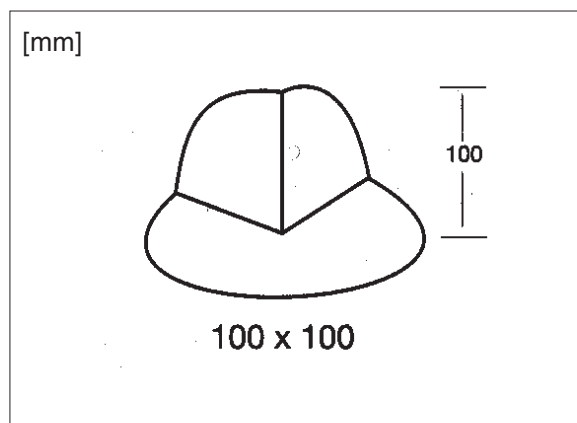
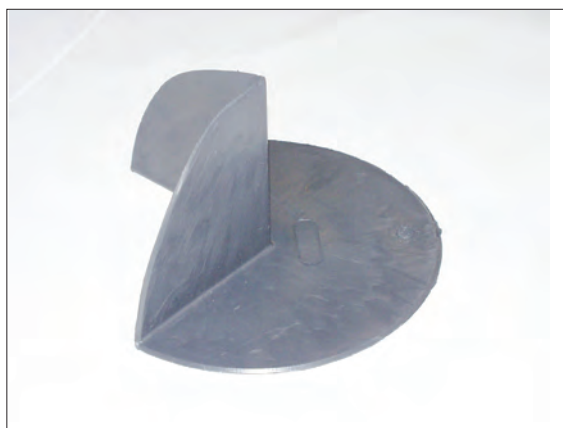
17.0 Præfabrikeret Protan FP indvendig hjørne

Materiale: Polyolefin



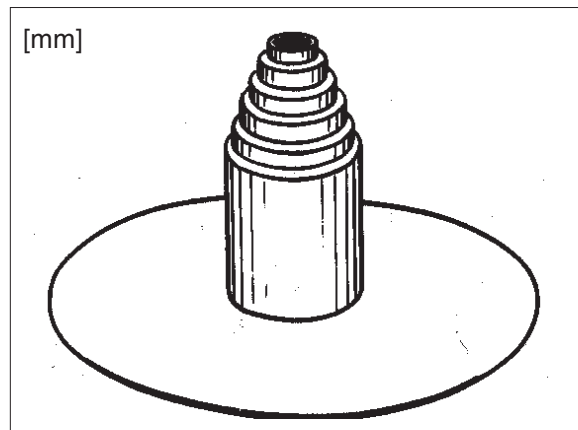
17.1 Præfabrikeret Protan FP udvendig hjørne

Materiale: Polyolefin



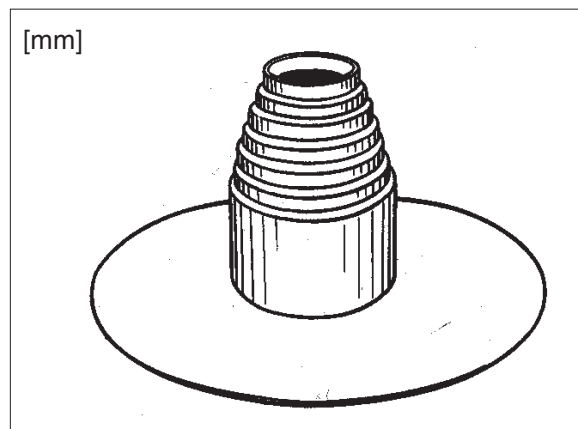
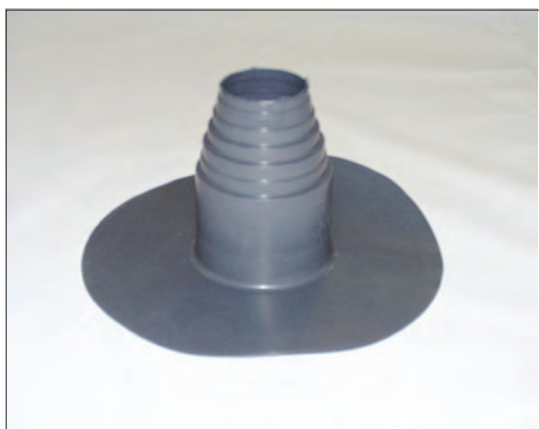
18.0 Præfabrikeret rør

Materiale: Polyolefin
Dimension: $\text{Ø} = 35\text{-}90 \text{ mm}$



18.1 Præfabrikeret rør

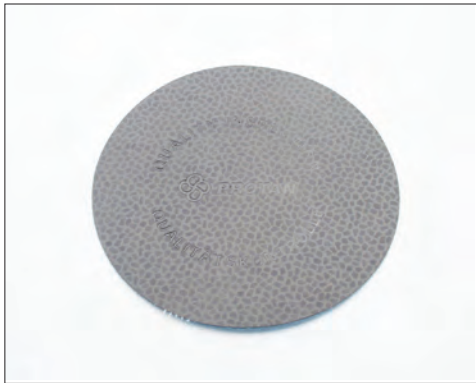
Materiale: Polyolefin
Dimension: $\text{Ø} = 75\text{-}125 \text{ mm}$



Protan kontrollapper

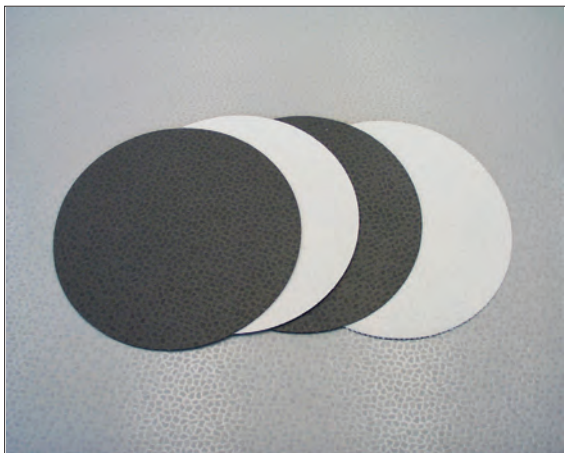
19.0 Protan FP kontrollapp

Materiale: Protan FP
Dimension: $\text{Ø} = 180 \text{ mm}$



19.1 Protan FP svejselapper

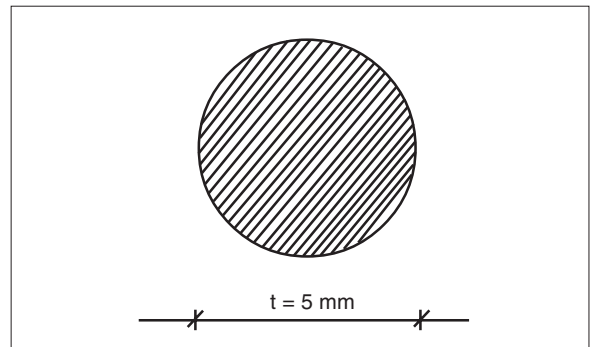
Materiale: Protan FP
Dimension: $\text{Ø} = 110 \text{ mm og } 180 \text{ mm}$



Protan FP svejsetråd

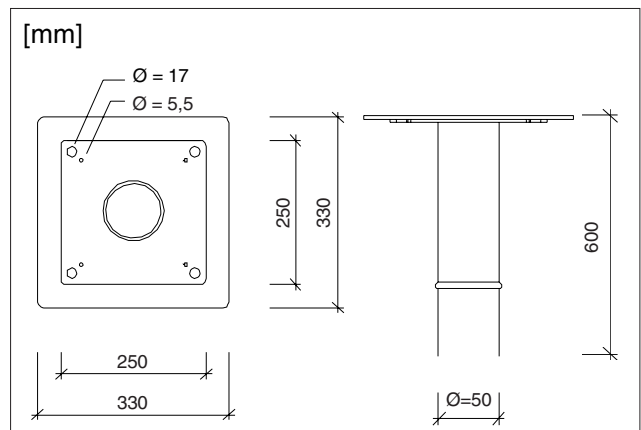
20.0 Protan FP svejsetråd

Materiale: Polyolefin
 Dimension: $\text{Ø} = 50 \text{ mm}$, $l = 70 \text{ m}$



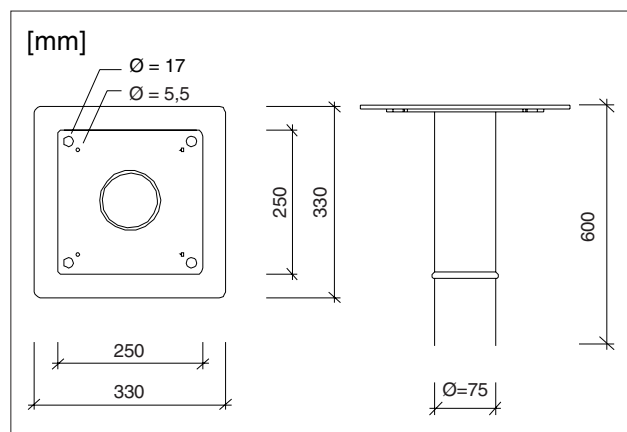
21.0 Jual tagbrønd

Materiale: PVC-belagt rustfrit stål + Protan FP
 Dimension: $\text{Ø} = 50 \text{ mm}$, $h = 600 \text{ mm}$



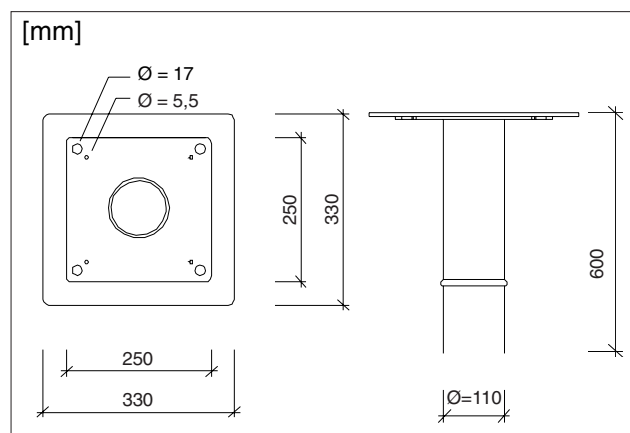
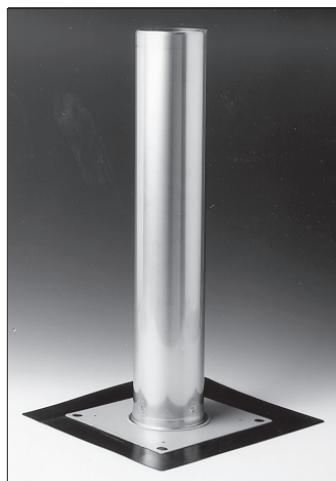
21.1 Jual tagbrønd

Materiale: PVC-belagt rustfrit stål + Protan FP
 Dimension: $\text{Ø} = 75 \text{ mm}$, $h = 600 \text{ mm}$



21.2 Jual tagbrønd

Materiale: PVC-belagt rustfrit stål + Protan FP
 Dimension: $\text{Ø} = 110 \text{ mm}$, $h = 600 \text{ mm}$



22.0 Kontrollverktøy for svejsninger



Specifikationer

Protan Prisliste



Protan A/S
Hørskættens 5 - DK-2630 Taastrup
Telefon 46 59 01 06 - Fax 46 59 01 15
www.protan.dk